

# Put on the Armor of God

Put on the whole armor of God, that you may be able to stand against the schemes of the devil.

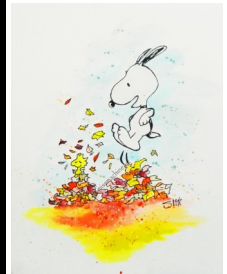
Ephesians 6:11

October 29, 2021

Trinity Lutheran School  
11503 German Church Rd.  
Burr Ridge, IL 60527  
Phone: 708-839-1444

School Website: [www.MYTLS.org](http://www.MYTLS.org)

Church Website: [www.TLBR.org](http://www.TLBR.org)



## Tiger Talk!

Greetings in the name of Jesus, our Lord!

Ready or not, the holiday season is upon us! It has been upon us for quite a while if you look at the stores.

One way that Trinity likes to support the village of Burr Ridge is to participate in the Jingle Mingle parade. Unfortunately, the parade is not happening this year, but the event is still going on. The new name of the event is Deck the Green. This is still taking place in the Village Center in Burr Ridge. Trinity will have an area at the event and will have giveaways for everyone that attends.

Mrs. Claus will help children draw pictures or write letters to our troops deployed around the world. There will be face painting and other favorite characters like Buddy the Elf and a Toy Soldier on stilts! Those familiar with the previous holiday events will also recognize the Miracle Express Train.

We hope that everyone is able to make this event and show their support for Trinity! Merry (early) CHRISTmas!

In His Service,  
Mr. DeWitt

TRINITY LUTHERAN CHURCH & SCHOOL ANNUAL GALA!  
NOVEMBER 12TH 6:00 p.m.  
ORLAND CHATEAU  
TICKETS: \$50 EACH OR TABLE OF 8 \$350



School Fundraiser Opportunity  
The Chicken Basket at 645 Joliet Road I-55 & Route 83, Willowbrook, on old Route 66, has again generously offered to support Trinity Lutheran School by hosting a fundraiser for the entire month of October. Twenty percent, 20%, of your check will be donated back to the school. No special form is required. When you pay your bill, tell the wait staff that you are fund raising for Trinity. Funds generated support the Tuition Assistance Fund. Carry-out available.



### UPCOMING EVENTS:

#### NOVEMBER:

- 4 Parent-Teacher Conferences 12:00-8:00p.m.
- 5 No School—Teachers' Inservice
- 12 FUN FRIDAY—PAJAMA DAY
- 12 Gala @ Orland Chateau 6 p.m.
- 15 Popcorn Monday
- 19 10:00—Grandparent's Day—11:30 Dismissal
- 19 Deck the Green (formerly Jingle Mingle) 5:00—7:00
- 24-26 Thanksgiving Break—No School
- 27 Ms. Haak's Birthday



#### DECEMBER:

- 2 2:00 Dismissal—Faculty Meeting
- 3 Fun Friday—Ugly Christmas Sweaters
- 12 Whole School Christmas Program 1:30 p.m.
- 13 Popcorn Monday
- 14 Ms. Aluzas's Birthday
- 21 Classroom Parties 11:30 Dismissal
- 22 Christmas Break Begins—January 4



Please Help! Needed for the Gala!  
Do you have gift cards that you will never use? Please consider donating them to the school Gala committee. We will be having a gift card pull. Thank you in advance for your help!



### November Athletics:

JV Basketball Practice:  
Monday, November 1 until 5  
Tuesday, November 2 until 5  
Wednesday, November 3 until 5



Cheerleading Practice:  
Monday, November 1 until 4:30  
Wednesday, November 3 until 4:30

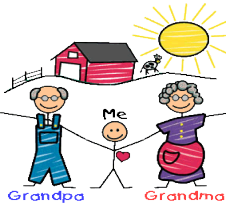


TOTAL SCHOOL ITEMS COLLECTED:  
906



## Hooray! It's the return of GRANDPARENTS' DAY!

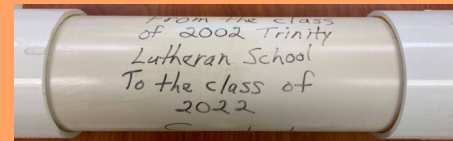
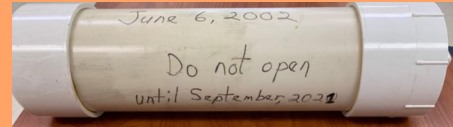
We are happy to announce that Grandparents and other adult guests are invited to visit our school on Friday, November 19 from 10:00 to 11:30 a.m. (ALL PRESCHOOL students are encouraged to attend with their guests during that time frame.)



We will be limiting our activities to the gym that morning. School will be dismissed at 11:30 a.m. Look for a letter that came home this week, and put grandparents on alert for November 19th!

## TIME CAPSULE

The time capsule from the graduating class of 2002 will be opened at the end of the Chapel service on Wednesday, November 10th. The opening of the time capsule will be live-streamed on Facebook around 9:00 a.m.



[www.Funderworks.com/Trinitylutheran](http://www.Funderworks.com/Trinitylutheran)

**Reminder: cookie dough orders are due early next**

# TRINITY LUTHERAN SCHOOL

These funds will be used to fund our Athletic Programs and buy new recess equipment that benefit Trinity Lutheran students. Our goal is for every student to sell 8 items and raise over \$6,000.

MONDAY	TUESDAY	WEDNESDAY	THURSDAY	FRIDAY
18 Sale Begins!	19	20	21	22
25	26	27	28	29
1	2 Sale Ends All Money and Orders Due!			

## 2 GREAT SEPARATE WAYS TO SUPPORT OUR SALE!

### OPTION 1 MRS FIELDS COOKIE DOUGH!

Order on Paper or Online!

1. Make checks payable to **TRINITY LUTHERAN**.
2. Please fill out your order form and envelope completely with your name, teacher, class and phone number.
3. Total up each item on your order form and note the order totals on your collection envelope.
4. Take the white part of the order form and payment, place inside filled out collection envelope. Keep the yellow order form for your records and distribution to your customers.

Order Online

1. Use the custom web address or scan the QR Code to register for the fundraiser.  
<https://onlineorders.mrsfieldsfundraising.com/trinitylutheranschool/cookies>
2. Add your picture and update your message. You can even create a video message.
3. Add your contacts.
4. Start sharing on Social Media.



**ALL PRODUCT WILL BE DELIVERED TO THE SCHOOL AT A LATER DATE!**

### OPTION 2 MAGAZINES!

ONLINE ONLY!

1. Register
  - Go to: [funderworks.com/TRINITYLUTHERAN](http://funderworks.com/TRINITYLUTHERAN)
  - Click REGISTER
2. Personalize
 

Follow the steps:

  - Enter your account details
  - Create an avatar that looks like you!

Easily track your progress online
3. Promote
  - Send emails to friends & family
  - Share on social media
  - Text your link to supporters

## PRIZES

**Sell 1, 3 and every 3 more** receive another PorkChop Posse Collectable (note collectables will be handed out at the end of the sale)

**Sell 12** Receive the whole family of collectables! **As a Bonus** for every 5 items sold you will be entered into a raffle to win cash and prizes! Example 5 = 1 ticket, 10 = 2 tickets. etc. Note that every order of Mrs Fields counts as one item and every \$25 donation counts as one item.



\$ \_\_\_\_\_ **Order Total (Please make checks payable to "Trinity Lutheran School" and attach to order)**

Waiver: In placing this order, I release TRIP and/or Trinity Lutheran of any responsibility for lost or stolen certificates and I acknowledge there are no refunds or exchanges of orders. Contact Michele in the office for any

Name:	_____ Held for my family account for dispersement.
Email:	_____ Another Trinity family:
Cell Phone: # (     )	_____ Applied to the
_____ A text will be	Tuition Assistance Fund.

Delivery: All orders will be available for pickup between 8:00 - 3:30 in the school office the Friday following the order date, or sometime sooner. **Multi-family/friend orders can be grouped in a single pickup: Name:**

**Shop online for more merchants or amounts, or reload avail. gift cards @www.shopwithscrip.com Trinity**  
**Member Code: C73LF95B7L57 Orders submitted Mon. morning @ 9 a.m. Order Due Dates: \*October 4 & 18\***  
**\*November 1 & 18\* \*December 6 & 13\***

Automotive	%	QTY	Total
AutoZone	8.0%		\$25
Shell	1.5%		\$25
Shell	1.5%		\$50
Shell	1.5%		\$100
Speedway	4.0%		\$25
Speedway	4.0%		\$50
Speedway	4.0%		\$100

Clothing	%	QTY	Total
American Eagle Outf	10.0%		\$25
Banana Republic	14.0%		\$25
Children's Place	12.0%		\$25
Gap	14.0%		\$25
Marshalls	7.0%		\$25
Old Navy	14.0%		\$25
T.J. Maxx	7.0%		\$25
T.J. Maxx	7.0%		\$100

Department Stores	%	QTY	Total
Bloomingdale's	12.0%		\$25
Kohls	4.0%		\$25
Kohls	4.0%		\$100
Macy's	10.0%		\$25
Macy's	10.0%		\$100
Target	2.5%		\$25
Target	2.5%		\$50
Target	2.5%		\$100
Walmart	2.5%		\$25
Walmart	2.5%		\$50
Walmart	2.5%		\$100

Entertainment	%	QTY	Total
AMC Theaters	8.0%		\$25
Chuck E. Cheese	8.0%		\$10
Marcus Theatres	8.0%		\$25

Grocery	%	QTY	Total
CVS Pharmacy	6.0%		\$25
Jewel	4.0%		\$25
Jewel	4.0%		\$50
Jewel	4.0%		\$100
Mariano's (IL only)	4.0%		\$25
Meijer (not AK or HI)	3.0%		\$25
Meijer (not AK or HI)	3.0%		\$50
Meijer (not AK or HI)	3.0%		\$100
Pete's Fresh Market	4.0%		\$20
Sam's Club	2.5%		\$25
Sam's Club	2.5%		\$100
Walgreens	5.0%		\$25
Walgreens	5.0%		\$100

Home Improvement	%	QTY	Total
Ace Hardware	4.0%		\$25
Lowes	4.0%		\$25
Menards	3.0%		\$25
Menards	3.0%		\$100
The Home Depot	4.0%		\$25
The Home Depot	4.0%		\$100

Pets	%	QTY	Total
Petsmart	5.0%		\$25

Restaurants	%	QTY	Total
Applebee's	8.0%		\$25
Arby's	8.0%		\$10
Auntie Anne's	6.0%		\$25
Bonefish Grill	10.0%		\$50
Buca di Beppo	8.0%		\$25
Buffalo Wild Wings	8.0%		\$25
Buona Beef	8.0%		\$10
California Pizza Kitch	8.0%		\$25
Carrabba's	10.0%		\$25
Cheesecake Factory	5.0%		\$25
Chili's/ Maggiano's	11.0%		\$25
Chipotle	10.0%		\$10
Chipotle	10.0%		\$25
Cinnabon	6.0%		\$25
Cold Stone Creamer	8.0%		\$10
Cracker Barrel	8.0%		\$10
Cracker Barrel	8.0%		\$25
Dunkin	3.0%		\$10
Dunkin	3.0%		\$25
Freddy's	8.0%		\$25
Grubhub	4.0%		\$5
IHOP	8.0%		\$10
Lou Malnati's	8.0%		\$10
Lettuce Entertain Yo	12.0%		\$25
Maggiano's/Chili's	11.0%		\$25
Moe's Southwest Gr	6.0%		\$25
Noodles & Co.	8.0%		\$10
Olive Garden	9.0%		\$25
Outback Steakhouse	10.0%		\$25
P.F. Chang's	8.0%		\$25
Panda Express	8.0%		\$25
Panera Bread	8.0%		\$10
Panera Bread	8.0%		\$25
Potbelly	8.0%		\$10
Rainforest Café	9.0%		\$25
Red Lobster	8.0%		\$25
Red Robin	8.0%		\$25
Shaw's Crab House	12.0%		\$25
Sonic	8.0%		\$10
Starbucks	7.0%		\$10
Starbucks	7.0%		\$25
Subway Restaurants	4.5%		\$10
Taco Bell	5.0%		\$10
Texas Roadhouse	8.0%		\$25
TGI Friday's	9.0%		\$25
Wendy's	6.5%		\$10
Wildfire	12.0%		\$25
Total \$ first side, 1st column			
Total \$ first side, 2nd column			
Total \$ this side, 1st column			
Total \$ this side, 2nd column			

Specialty	%	QTY	Total
Amazon	2.3%		\$25
American Airlines	6.0%		\$100
Barnes & Noble	8.0%		\$25
Bass Pro Shops	10.0%		\$25
Bath & Body Works	12.0%		\$10
Bed, Bath, & Beyond	7.0%		\$25
Bed, Bath, & Beyond	7.0%		\$100
Best Buy	4.0%		\$25
Best Buy	4.0%		\$100
Build - A - Bear	8.0%		\$25
buybuyBaby	7.0%		\$25
Cabela's	10.0%		\$25
Claire's	9.0%		\$10
Comfort Suites	3.5%		\$50
Container Store	9.0%		\$25
Dick's Sporting Good	8.0%		\$25
Discover Universal G	1.2%		\$50
Disney	3.0%		\$25
Disney	3.0%		\$100
DSW	8.0%		\$25
Fannie May Candies	25.0%		\$10
GameStop	3.0%		\$25
Great Clips	8.0%		\$25
Groupon	7.0%		\$25
H & M	7.0%		\$25
Hallmark	4.0%		\$25
HomeGoods	7.0%		\$25
Hotels.com	6.0%		\$100
iTunes	5.0%		\$15
iTunes	5.0%		\$25
Joann	6.0%		\$25
Jos. A. Banks	10.0%		\$25
Michael's	4.0%		\$25
Nike	12.0%		\$25
Office Depot/Max	5.0%		\$25
Overstock.com	8.0%		\$25
Pottery Barn	8.0%		\$25
Staples	5.0%		\$25
Shutterfly	9.0%		\$25
Sephora	5.0%		\$25
Supercuts	8.0%		\$25
TopGolf	8.0%		\$50
Ulta Beauty	6.0%		\$25
Vera Bradley	7.0%		\$50
Visa	1.3%		\$50
Visa	1.3%		\$100
Wayfair	6.0%		\$100
West Elm	8.0%		\$25
Yankee Candle	8.0%		\$5
Online Selection:			
Total \$			