

Put on the Armor of God

Put on the whole armor of God, that you may be able to stand against the schemes of the devil.

Ephesians 6:11

November 4, 2021

Trinity Lutheran School
11503 German Church Rd.
Burr Ridge, IL 60527
Phone: 708-839-1444

School Website: www.MYTLS.org

Church Website: www.TLBR.org



Tiger Talk!

Greetings in the name of our Lord!
GRANDPARENTS' DAY is back! After one year off, Trinity will be welcoming grandparents and special adult friends to our school. This event is for **ALL** our students in **Preschool-8th Grade**. There will be **NO CLASS** for PM Preschool that day.

On Friday, November 19 at 10:00 a.m., grandparents will hear a devotion, as well as some student-led songs. Following those activities, we will also have some enjoyable games and activities for the grandparents to share with their student. Your R.S.V.P. form is due back on Monday, November 8.

Grandparents' Day **DISMISSAL WILL BE AT 11:30 A.M. FOR ALL STUDENTS**. Please let **KEEP** know if you are planning on having your child stay. We hope that we have many grandparents and special adult friends to share our day with!

In His Service,

Mr. DeWitt

Are you interested in joining Trinity's Board of Education? We are looking for school parents to join our team. Please contact Principal Andy DeWitt. 708-839-1444 x3 or adewitt@mytsonline.com

TRINITY LUTHERAN CHURCH & SCHOOL ANNUAL GALA!
NOVEMBER 12TH 6:00 p.m.
ORLAND CHATEAU
TICKETS: \$50 EACH OR TABLE OF 8 \$350
LAST CHANCE TO BUY TICKETS NOV. 9



UPCOMING EVENTS: NOVEMBER:

- 4 Parent-Teacher Conferences 12:00-8:00p.m.
- 5 No School K-8—Teachers' Inservice
- 12 **FUN FRIDAY—PAJAMA DAY**
- 12 Gala @ Orland Chateau 6 p.m.
- 15 Popcorn Monday
- 19 10:00—Grandparent's Day—11:30 Dismissal
- 19 Deck the Green (formerly Jingle Mingle) 5:00—7:00
- 24-26 Thanksgiving Break—No School



DECEMBER:

- 2 2:00 Dismissal—Faculty Meeting
- 3 Fun Friday—Ugly Christmas Sweaters
- 12 Whole School Christmas Program 1:30 p.m.
- 13 Popcorn Monday
- 14 Ms. Aluzas's Birthday
- 21 Classroom Parties 11:30 Dismissal
- 22 Christmas Break Begins—January 4



November Athletics:

JV Basketball Games:

Monday, November 8, HOME vs. LaGrange 4:00
Tuesday, November 9, HOME vs. Itasca 4:00

JV Basketball Practice:

Wednesday, November 10 until 5

Cheerleading Practice:

Wednesday, November 10 until 4:30

Thursday, November 11 until 4:30

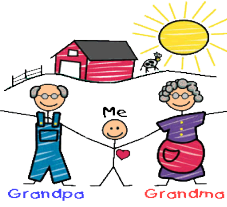


TOTAL FOOD ITEMS COLLECTED:
17



Hooray! It's the return of GRANDPARENTS' DAY!

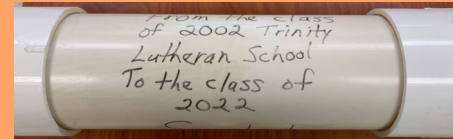
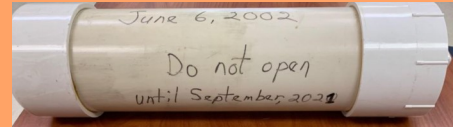
We are happy to announce that Grandparents and other adult guests are invited to visit our school on Friday, November 19 from 10:00 to 11:30 a.m. (ALL PRESCHOOL students are encouraged to attend with their guests during that time frame.)



We will be limiting our activities to the gym that morning. School will be dismissed at 11:30 a.m. Look for a letter that came home this week, and put grandparents on alert for November 19th!

TIME CAPSULE

The time capsule from the graduating class of 2002 will be opened at the end of the Chapel service on Wednesday, November 10th. The opening of the time capsule will be live-streamed on Facebook around 9:00 a.m.



Happy Baptism Birthday!

God's blessings to those who are celebrating their baptism birthdays during the month of November:

Kali Bryja
Amelia Crawford
Wayne Schemmer IV
Gaby Vasquez
Mr. Grady



from Luther's Small Catechism:
What benefits does Baptism give?

It works forgiveness of sins, rescues from death and the devil, and gives eternal salvation to all who believe this, as the words and promises of God declare.

The next collection of Chapel offerings will be for San Pablo food pantry. See the list below of things we are collecting through February.

Items for San Pablo:

Beans (Dry- Bag)
Rice (Bag)
Cooking Oil
Corn Flour
Tomato Paste (Can)
Tomato Sauce (Can)
Cereals
Oatmeal
Instant Soup (Dry packaged)
Granola Bars



Mrs. DeWitt is looking for the following items to be donated:

Large wooden spools (cable spools)
Sawed log pieces (wood cookies)
Ride-on toys (used)
Wicker baskets (used)
Wooden planks
Buttons

Please do not go out and buy these items.
Used items can be treasures in disguise!



\$ _____ **Order Total (Please make checks payable to "Trinity Lutheran School" and attach to order)**

Waiver: In placing this order, I release TRIP and/or Trinity Lutheran of any responsibility for lost or stolen certificates and I acknowledge there are no refunds or exchanges of orders. Contact Michele in the office for any

Name:	_____ Held for my family account for dispersement.
Email:	_____ Another Trinity family:
Cell Phone: # ()	_____ Applied to the
_____ A text will be	Tuition Assistance Fund.

Delivery: All orders will be available for pickup between 8:00 - 3:30 in the school office the Friday following the order date, or sometime sooner. **Multi-family/friend orders can be grouped in a single pickup: Name:**

Shop online for more merchants or amounts, or reload avail. gift cards @www.shopwithscrip.com Trinity
Member Code: C73LF95B7L57 Orders submitted Mon. morning @ 9 a.m. Order Due Dates: *October 4 & 18*
November 1 & 18* *December 6 & 13

Automotive	%	QTY	Total
AutoZone	8.0%		\$25
Shell	1.5%		\$25
Shell	1.5%		\$50
Shell	1.5%		\$100
Speedway	4.0%		\$25
Speedway	4.0%		\$50
Speedway	4.0%		\$100

Clothing	%	QTY	Total
American Eagle Outf	10.0%		\$25
Banana Republic	14.0%		\$25
Children's Place	12.0%		\$25
Gap	14.0%		\$25
Marshalls	7.0%		\$25
Old Navy	14.0%		\$25
T.J. Maxx	7.0%		\$25
T.J. Maxx	7.0%		\$100

Department Stores	%	QTY	Total
Bloomingdale's	12.0%		\$25
Kohls	4.0%		\$25
Kohls	4.0%		\$100
Macy's	10.0%		\$25
Macy's	10.0%		\$100
Target	2.5%		\$25
Target	2.5%		\$50
Target	2.5%		\$100
Walmart	2.5%		\$25
Walmart	2.5%		\$50
Walmart	2.5%		\$100

Entertainment	%	QTY	Total
AMC Theaters	8.0%		\$25
Chuck E. Cheese	8.0%		\$10
Marcus Theatres	8.0%		\$25

Grocery	%	QTY	Total
CVS Pharmacy	6.0%		\$25
Jewel	4.0%		\$25
Jewel	4.0%		\$50
Jewel	4.0%		\$100
Mariano's (IL only)	4.0%		\$25
Meijer (not AK or HI)	3.0%		\$25
Meijer (not AK or HI)	3.0%		\$50
Meijer (not AK or HI)	3.0%		\$100
Pete's Fresh Market	4.0%		\$20
Sam's Club	2.5%		\$25
Sam's Club	2.5%		\$100
Walgreens	5.0%		\$25
Walgreens	5.0%		\$100

Home Improvement	%	QTY	Total
Ace Hardware	4.0%		\$25
Lowes	4.0%		\$25
Menards	3.0%		\$25
Menards	3.0%		\$100
The Home Depot	4.0%		\$25
The Home Depot	4.0%		\$100

Pets	%	QTY	Total
Petsmart	5.0%		\$25

Restaurants	%	QTY	Total
Applebee's	8.0%		\$25
Arby's	8.0%		\$10
Auntie Anne's	6.0%		\$25
Bonefish Grill	10.0%		\$50
Buca di Beppo	8.0%		\$25
Buffalo Wild Wings	8.0%		\$25
Buona Beef	8.0%		\$10
California Pizza Kitch	8.0%		\$25
Carrabba's	10.0%		\$25
Cheesecake Factory	5.0%		\$25
Chili's/ Maggiano's	11.0%		\$25
Chipotle	10.0%		\$10
Chipotle	10.0%		\$25
Cinnabon	6.0%		\$25
Cold Stone Creamer	8.0%		\$10
Cracker Barrel	8.0%		\$10
Cracker Barrel	8.0%		\$25
Dunkin	3.0%		\$10
Dunkin	3.0%		\$25
Freddy's	8.0%		\$25
Grubhub	4.0%		\$5
IHOP	8.0%		\$10
Lou Malnati's	8.0%		\$10
Lettuce Entertain Yo	12.0%		\$25
Maggiano's/Chili's	11.0%		\$25
Moe's Southwest Gr	6.0%		\$25
Noodles & Co.	8.0%		\$10
Olive Garden	9.0%		\$25
Outback Steakhouse	10.0%		\$25
P.F. Chang's	8.0%		\$25
Panda Express	8.0%		\$25
Panera Bread	8.0%		\$10
Panera Bread	8.0%		\$25
Potbelly	8.0%		\$10
Rainforest Café	9.0%		\$25
Red Lobster	8.0%		\$25
Red Robin	8.0%		\$25
Shaw's Crab House	12.0%		\$25
Sonic	8.0%		\$10
Starbucks	7.0%		\$10
Starbucks	7.0%		\$25
Subway Restaurants	4.5%		\$10
Taco Bell	5.0%		\$10
Texas Roadhouse	8.0%		\$25
TGI Friday's	9.0%		\$25
Wendy's	6.5%		\$10
Wildfire	12.0%		\$25
Total \$ first side, 1st column			
Total \$ first side, 2nd column			
Total \$ this side, 1st column			
Total \$ this side, 2nd column			

Specialty	%	QTY	Total
Amazon	2.3%		\$25
American Airlines	6.0%		\$100
Barnes & Noble	8.0%		\$25
Bass Pro Shops	10.0%		\$25
Bath & Body Works	12.0%		\$10
Bed, Bath, & Beyond	7.0%		\$25
Bed, Bath, & Beyond	7.0%		\$100
Best Buy	4.0%		\$25
Best Buy	4.0%		\$100
Build - A - Bear	8.0%		\$25
buybuyBaby	7.0%		\$25
Cabela's	10.0%		\$25
Claire's	9.0%		\$10
Comfort Suites	3.5%		\$50
Container Store	9.0%		\$25
Dick's Sporting Good	8.0%		\$25
Discover Universal G	1.2%		\$50
Disney	3.0%		\$25
Disney	3.0%		\$100
DSW	8.0%		\$25
Fannie May Candies	25.0%		\$10
GameStop	3.0%		\$25
Great Clips	8.0%		\$25
Groupon	7.0%		\$25
H & M	7.0%		\$25
Hallmark	4.0%		\$25
HomeGoods	7.0%		\$25
Hotels.com	6.0%		\$100
iTunes	5.0%		\$15
iTunes	5.0%		\$25
Joann	6.0%		\$25
Jos. A. Banks	10.0%		\$25
Michael's	4.0%		\$25
Nike	12.0%		\$25
Office Depot/Max	5.0%		\$25
Overstock.com	8.0%		\$25
Pottery Barn	8.0%		\$25
Staples	5.0%		\$25
Shutterfly	9.0%		\$25
Sephora	5.0%		\$25
Supercuts	8.0%		\$25
TopGolf	8.0%		\$50
Ulta Beauty	6.0%		\$25
Vera Bradley	7.0%		\$50
Visa	1.3%		\$50
Visa	1.3%		\$100
Wayfair	6.0%		\$100
West Elm	8.0%		\$25
Yankee Candle	8.0%		\$5
Online Selection:			
Total \$			